



## Retailer Bulletin

# How to achieve faster and longer-lasting turf “green-up” with Iron DDP

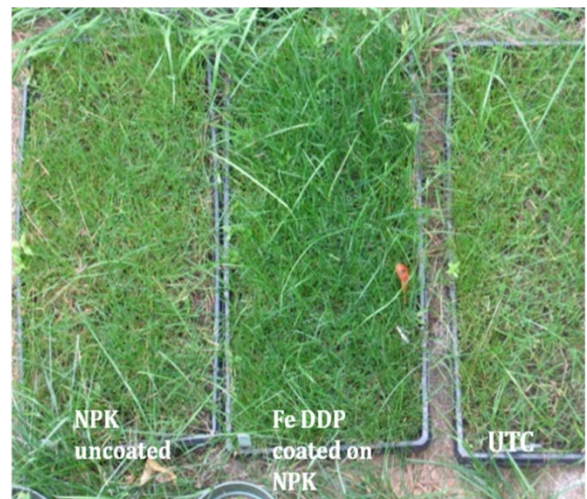
Most agronomists or groundskeepers are familiar with the growth boost and ‘green up’ that occurs on turf grass after an iron application. There is a good biological explanation for the better growth and darker green color of turf grass after an iron application. Iron is an essential element that plants need to make chlorophyll – so if you drive up chlorophyll capacity, you enhance photosynthesis and greenness.

### Iron – a ‘hard to get’ nutrient

Many soils have characteristics or properties that “block” access to the iron that is naturally present in the soil. Soils that have a high manganese-to-iron ratio, a high pH, or the presence of free lime do not allow easy access to soil iron for turf roots to uptake. Cold weather can slow the growth of roots to the point where iron deficiencies become of concern. The result is a loss of greenness in turf. All of these complexities mean that it is often important to fertilize with iron – and to use an iron source that is easily accessed by the plant.

### Wolf Trax Iron DDP – Iron that is ‘easy to get’

Coating NPK fertilizer blends with Wolf Trax Iron DDP has been a well-established practice for use on turf in many areas of North America. Having small amounts of iron coating every single prill or granule of the macro blend means frequent points of interception for turf roots.



Page 1 of 3

(continued)

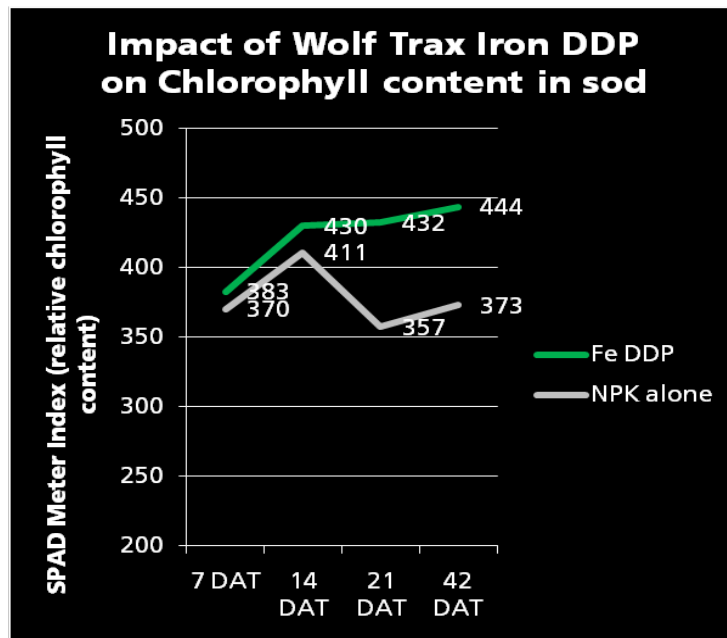
Essentially, every time the turf feeds off the N, P or K that is applied, it feeds off a small amount of iron as well. This approach is superior to using large “chunks” of granular iron.

### Wolf Trax Iron DDP – Results summary

Because chlorophyll is the key element to plant growth and greenness, Wolf Trax trials have measured plant greenness in grass treated with Iron DDP. The Iron DDP was applied as a coating on an NPK mix and then spread onto turf plots. These treatments were compared with plots fertilized with the same NPK mix without the Iron DDP. Quantitative measures of turf greenness were collected every week over the course of several weeks (42 days) after fertilization using a SPAD meter (which measures reflectance of chlorophyll).

There are four key findings from this trial:

1. After the initial application, all fertilizer treatments (with and without Iron DDP) saw rapid greening up, indicating that the grass was taking up the fertilizer as expected.
2. Faster green up was observed with the Iron DDP coated onto NPK. .
3. Over the course of the next 33 days, the greening effect of NPK alone began to decrease as the grass used up the fertilizer.
4. Greening continued with the treatment including Iron DDP.



This study shows that Iron DDP coated on fertilizer is an effective method to increase greenness of turf, and these benefits extend for several weeks after application.

(continued)

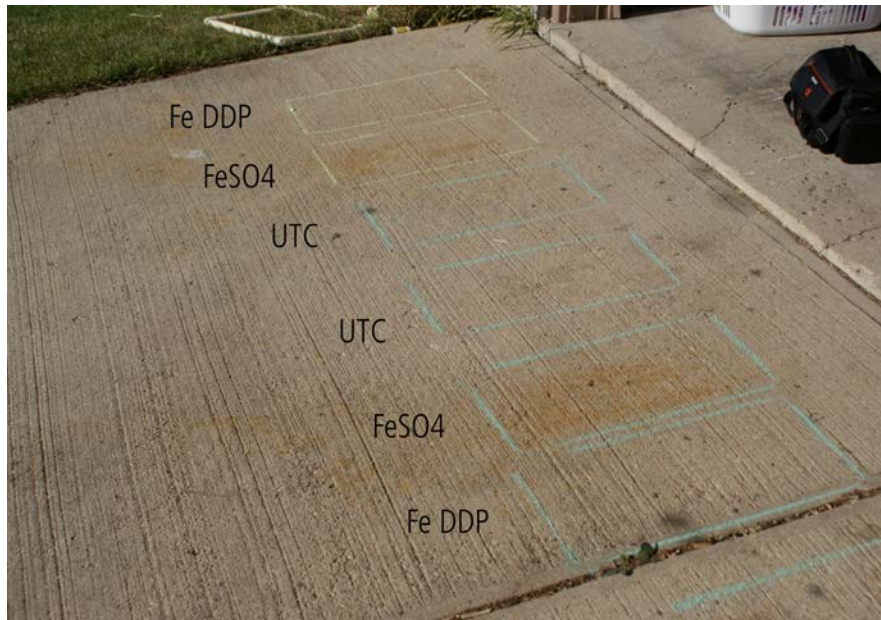
### A word about pavement staining

Most turf professionals worry about pavement staining. The dilemma they face is that water soluble forms of iron (e.g. granular sulphates) can badly stain pavement or brickwork.

Insoluble forms of iron like iron oxides stain less, however, they are not plant available, and therefore are not effective in providing iron nutrition for turfgrass.

Wolf Trax examined staining characteristics of Iron DDP and compared to that seen from an iron sulphate granule. Here are the findings:

- Granular iron sulphate left large orange staining on concrete. The stains left by the granulars could not be removed with water if left overnight.
- Wolf Trax Iron DDP left transient 'freckling' at the point where the coated granule sat on the pavement but this was easily washed simply with water if washed within 18 hours.



*You and Wolf Trax....Growing Forward® together.*

For more information on the Wolf Trax DDP family of Innovative Micronutrients, please call 204-237-9653, or visit us at [www.wolftrax.com](http://www.wolftrax.com).

Not all products are registered for all uses in all markets. Contact Compass Minerals for more details. Wolf Trax®, DDP® and Growing Forward® are trademarks of Compass Minerals Manitoba, Inc.